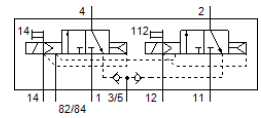
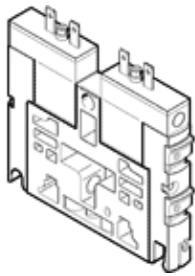


solenoid valve

CPV10-M1H-2X3-GLS-Y-M7-B-EX

Part number: 553261

FESTO



Data sheet

| Feature | Value |
|---|---|
| Valve function | 2x3/2 closed, monostable |
| Type of actuation | electrical |
| Valve size | 10 mm |
| Standard nominal flow rate | 400 l/min |
| Operating pressure | 0.1 ... 10 bar |
| Design structure | Piston slide |
| Type of reset | Air spring |
| Protection class | IP50 |
| Nominal size | 4 mm |
| Exhaust-air function | not throttleable |
| Sealing principle | soft |
| Assembly position | Any |
| Manual override | detenting Pushing |
| Type of piloting | Piloted |
| Pilot air supply | external Internal |
| Flow direction | non reversible |
| Overlap | Positive overlap |
| Pilot pressure | 3 ... 8 bar |
| b value | 0.4 |
| C value | 1.6 l/sbar |
| Switching time off | 37 ms |
| Switching time on | 17 ms |
| Duty cycle | 100% with holding current reduction |
| Required current consumption | 0.016 A |
| Max. input power | 0,76 W |
| Max. input voltage | 32 V |
| Max. input current | 0.2 A |
| effective inductivity | negligibly small |
| effective capacity | negligibly small |
| Operating medium | Compressed air in accordance with ISO8573-1:2010 [7:4:4] |
| Note on operating and pilot medium | Lubricated operation possible (subsequently required for further operation) |
| Corrosion resistance classification CRC | 2 - Moderate corrosion stress |
| Storage temperature | -20 ... 40 °C |
| Medium temperature | -5 ... 50 °C |
| Ambient temperature | -5 ... 50 °C |
| Product weight | 70 g |
| Mounting type | with through hole |
| Auxiliary pilot air port 12/14 | Common line |
| Pilot exhaust port 82/84 | Common line |
| Pneumatic connection, port 1 | Common line |
| Pneumatic connection, 11 | Common line |
| Pneumatic connection, port 2 | M7 |
| Pneumatic ports 3/5 combined | Common line |

| Feature | Value |
|------------------------------|--|
| Pneumatic connection, port 4 | M7 |
| Materials note | Conforms to RoHS |
| Material seals | HNBR NBR |
| Material housing | Aluminium die cast Brass POM PPS Steel |